

Alder Park **Community Workshop #2- Meeting Notes**

Meeting Date: May 16, 2005
Meeting Time: 6:30 – 8:00 pm
Attending: Community Citizens (18 residents signed in)
City Staff: Janet Baker, Park Planning,
Design and Development
Division Manager
Jeff Nittka, Landscape Assistant /
Project Manager

Meeting Notes

- A. Introduction
- B. Reviewed Notes from Meeting #1 (April 13, 2005)
 - 1. Master plan and development process
 - 2. Reviewed the park site location
 - 3. Went over the sites opportunities and constraints
 - 4. Reviewed the description of different size parks
 - 5. Three examples of park in similar size to Alder park were presented (River Otter, Charlie Jensen, and Blue Oak Park)
 - 6. Then community participation and suggestions of park amenities
 - a. Listing of desired park amenities
 - b. Discussion of suggested items
 - c. Then the community voted on the items and ranked them in this order
 - 1. Gazebo w/ benches
 - 2. Park Lighting – Motion detector light
 - 3. Exercise Stations
 - 4. Earth Mounds
 - 5. Playground
 - 6. Group picnic area with shade structure
 - 7. Bocce ball court
 - 8. Post & cable fencing
 - 9. Horseshoe courts
 - 10. Basketball ½ court
 - d. Additional items which were discussed
 - 1. Doggy Waste Stations - to be included into the park
 - 2. Benches in the park - to be included into the park
 - 3. Traffic Engineering Issues – Phone 808-5307
 - 4. Screen Utilities – with shrubs
 - 5. Mounds of earth – to be included in the park
 - 6. Trees w/ Color – to be included in the park
- C. Alder Park Proposed Master Plan was presented see -Example 1
 - 1. Brief master plan description

The intent of the park master plan design is to have the Gazebo as a neighborhood gathering area similar to old town centers that have Gazebos for events and gatherings. The earth will be raised to make the Gazebo the most prominent feature in the park. The earth mounding on the Bridgecross side of the park is intended to have flowering shrubs with a mass of color with wild roses and other flowing shrubs. At the corners of the park site along Bridgecross, the park will have colorful shrub beds with Barberry, Flax, and Rock Rose. The west side of the site is designed to have a formal feel and to the east side of the park site the designed to be more natural. In the center of the park site is an open turf area, which is designed to be a couple of feet lower than the existing perimeter pathways. Along the perimeter pathway will be shade trees to give shade to the park users strolling around the park.

On the east side of the park is a pathway that draws the park users into the site. Along this pathway is park benches, a small picnic area and fitness stations. This walkway is bordered on one side by turf and on the other side with non-irrigation native grasses/ wildflowers (Natural Area). Additionally within the natural area are several draught tolerant trees like; Oaks, Buckeyes and there will also be some Alder trees. Some examples of the items in the master plan displayed in Example 2.

D. Community Participation and discussion of the park master plan

1. *The community was concerned with barbeques at the picnic area.* They voted to have them removed from the master plan.
2. *Why are picnic tables in the plan? They were not an item requested by the community in the first workshop.* Parks put in picnic tables in the plan to better serve the community. The community voted to leave the picnic tables in the plan.
3. *Will the picnic area be by reservation only?* It was discussed and the community voted to have this picnic area as a first come first serve basis rather than reservation only picnic area.
4. *There was a request to have a direct walkway through the flowing shrub area along Bridgecross to the Gazebo.* Parks explained with the elevated gazebo area, the walkway would be too steep so stairs would have to be installed. Parks has looked into it more and with the limited budget parks will not be able to afford the stairs and handrails that would be required for this walkway.
5. *Where is the lighting?* The lighting will be incorporated into the Gazebo structure and will have a motion detector.
6. *What type of trees will have color?* Parks has not specified the tree varieties in this plan but some ideas are Chinese Pistach, Japanese Zelkova, and / or crape myrtles. The community suggested Ginko trees be incorporated into the plan.
7. *The site furnishing in (Example 2 – Park Amenities Example) are all different colors, is this the color of the proposed furnishings?* These examples are photos the vendors had available, the color can be decided on by the community. The community would like the furnishing to have natural colors (greens, browns or tans). Parks will work with these colors.
8. *Why is there no play area?* At the first meeting it was explained that there are several play areas planned to go in and existing in this community. Also the play area at the school is supposed to be available to the community when school is not in session. It was also explained that the limited project budget would not allow for both the Gazebo and play area. The community voted at the first meeting and the Gazebo was a higher priority.

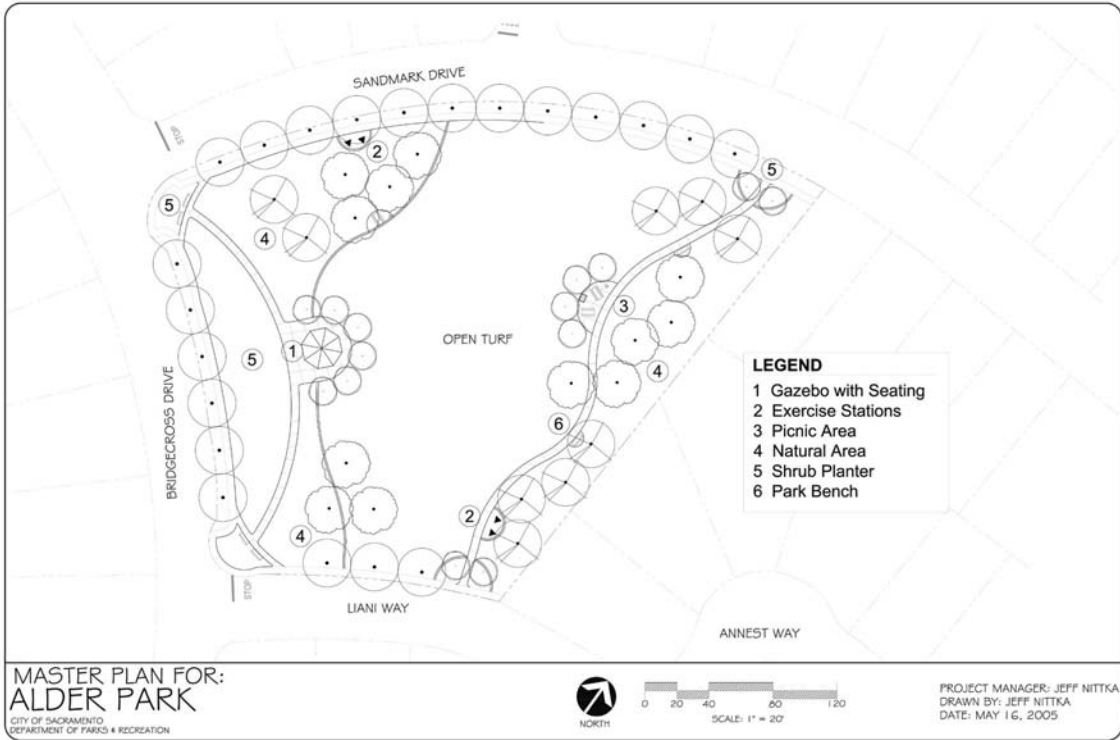
E. Alder Park Budget

1. The budget for this park project is approximately \$316,000. The money is set aside and cannot be taken away or applied to other parks. The design shown in the master plan comes within budget.

E. Park Development Schedule

1. Parks will revise the plan and mail out the final plan to community members who attended the meeting. Also the City will post the final master plan on the Parks and Rec. web page.
2. Park process from this meeting will be:
 - a. Construction document and environmental process completed winter 2005.
 - b. Project goes out to bid winter, approximately February 2006
 - c. Park construction starts spring 2006.
 - d. Construction completed summer 2007.

G. Meeting Adjourned



Example 1



Example 2